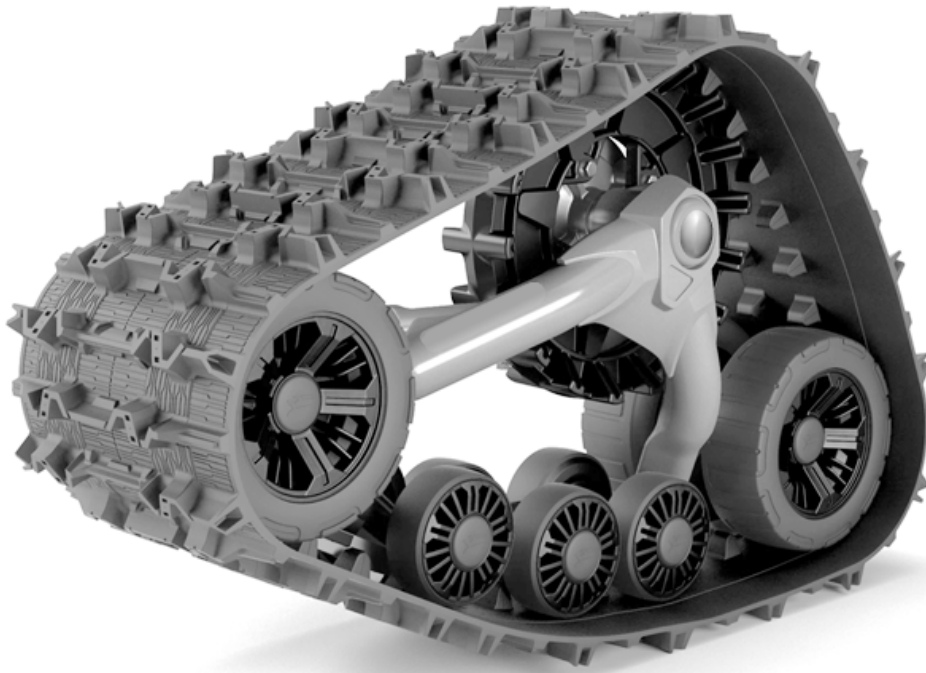


Installation Guidelines

Arctic Cat / Textron

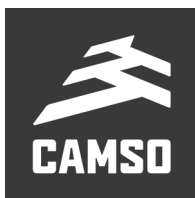
5000-01-0256-MAN

CAMSO



**Track System for SxS
vehicles**





⚠ WARNING

Please read carefully each part of this document as well as the *User Manual* prior to assembling, installing and using the Track System.

CAUTION: Longevity of the Camso Track System's components is directly linked to the way in which the System is used. Sportive driving, rapid direction changes and repeated fast turns (especially on power steering vehicles) are not advised. These driving styles increase the risk of derailing and can cause premature wear and or major breakdowns on the Track System which will not be covered under normal warranty.

Camso inc.
4162, rue Burrill - Local A
Shawinigan, QC G9N 0C3
CANADA

TECHNICAL SUPPORT

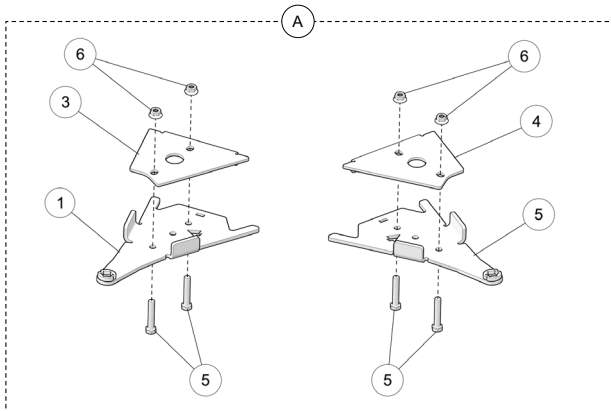
If your dealer or distributor is unable to solve a problem related to the System, you may contact the Camso support team from Monday to Friday.

E-Mail: enduser.atv@camso.co
Internet: www.camso.co

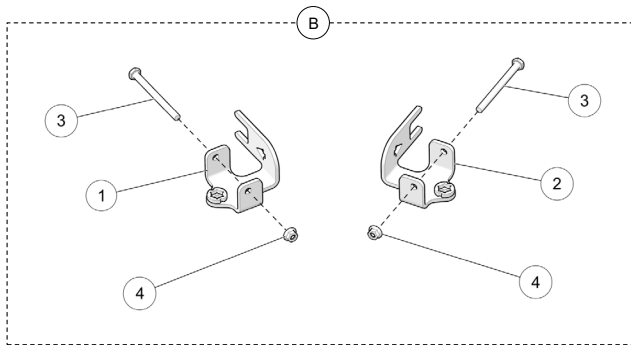
Dealer or distributor phone:
Serial #:
Purchase date:

PARTS LIST

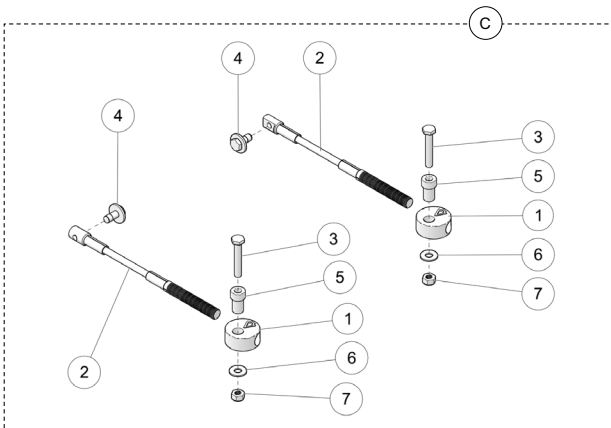
CAUTION: Before beginning the installation, make sure that you have received all the components included in the parts lists below.



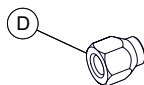
ITEM	PART #	DESCRIPTION	QTY
A	1004-01-0850	FRONT BRACKET KIT	1
1	--	ANTI-ROTATION FRONT BRACKET - LH	1
2	--	ANTI-ROTATION FRONT BRACKET - RH	1
3	--	FRONT COVER - LH	1
4	--	FRONT COVER - RH	1
3	1033-10-0055	HEX BOLT - HCS, M10-1.5X55, 8.8, ZP, DIN931	4
4	1074-10-0001	NYLON NUT - FNN, M10-1.5, 8, ZP, DIN6926	4



ITEM	PART #	DESCRIPTION	QTY
B	1005-01-0970	REAR BRACKET KIT	1
1	--	ANTI-ROTATION REAR BRACKET - LH	1
2	--	ANTI-ROTATION REAR BRACKET - RH	1
3	1033-10-0120	HEX BOLT - HCS, M10-1.5X120, 8.8, ZP, DIN931	2
4	1074-10-0001	NYLON NUT - FNN, M10-1.5, 8, ZP, DIN6926	2



ITEM	PART #	DESCRIPTION	QTY
C	1003-77-3500	STEERING LIMITER ASSY	1
1	1003-77-3515	THREADED DISK	2
2	1003-77-3560	CABLE ASSY	2
3	1033-10-0060	HEX BOLT - HCS, M10-1.5X60, 8.8, ZP, DIN931	2
4	1033-10-2026	BOLT - HCSW, M10-1.5X25, 8.8, ZP, TL, DIN933	2
5	1050-00-0200	STEP SPACER	2
6	1060-00-0004	WASHER - W, 7/16X1.0X0.072, 8, ZP, USS	2
7	1071-10-0001	NYLON NUT - NN, M10-1.5, ZP, 8, DIN982	2



ITEM	PART #	DESCRIPTION	QTY
D	1178-10-X001	LUG NUT - LN, M10-1.25X20, 8, ZP	16

INFORMATION

1. For installation purposes, directional arrows have been cut out of some components in the anchor bracket kits. These arrows indicate the front of the vehicle relative to the component. See Fig. 1

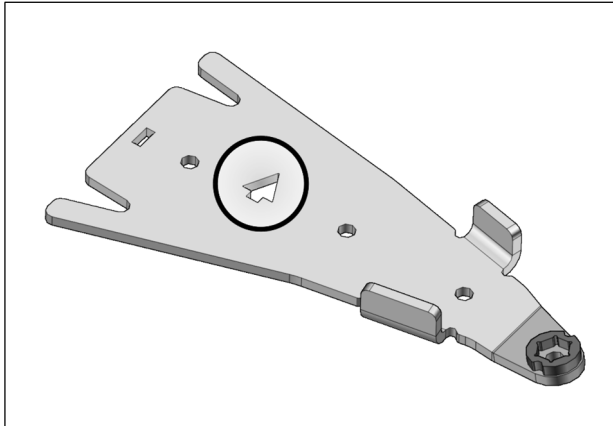


Fig. 1

2. Identify the mounting position of each Track System undercarriage unit; the position is indicated on a small sticker affixed on the undercarriage frame. See Fig. 2

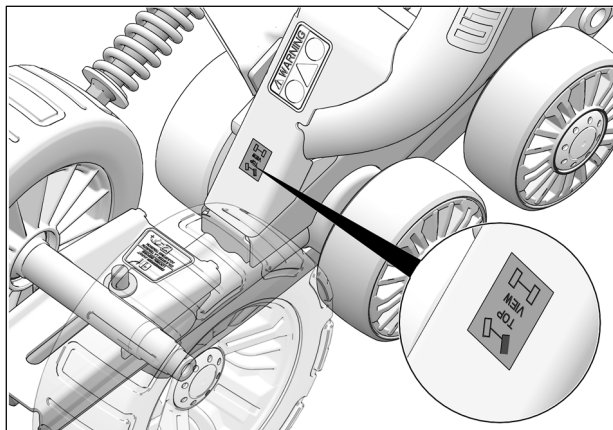


Fig. 2

PREPARATION

WARNING

Do not place any part of your body under the vehicle unless it is securely placed on appropriate stands. Severe injuries could occur if the vehicle collapses or moves. Do not use a lifting device as a secure stand.

1. Position the vehicle on a flat and level surface, shift the transmission to neutral and turn off engine.
2. Set each Track System unit near the position indicated by the sticker affixed on the frame.

REAR TRACK SYSTEM INSTALLATION

1. Using a lifting device, raise the rear of the vehicle and install appropriate stands. Ensure that the vehicle is immobilized and safe to work on.
2. Remove rear wheels. Make sure that wheel studs and wheel hubs are free of dirt.
3. If needed, remove CV joint protectors.
4. Remove bolt, washers and spacer bushings from rear stabilizing rod end and insert bolt in the rear anchor bracket (**B1-B2**) as shown in Fig. 3

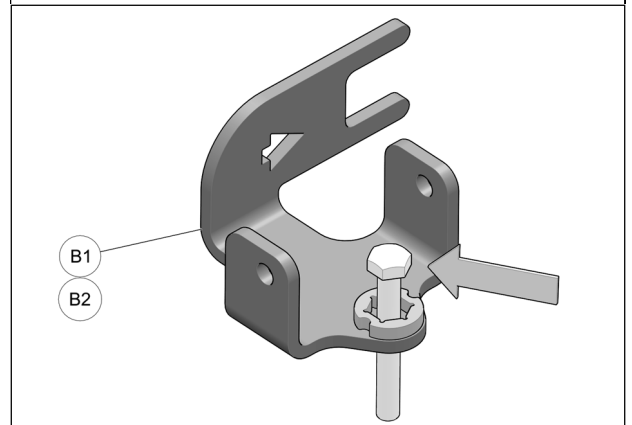
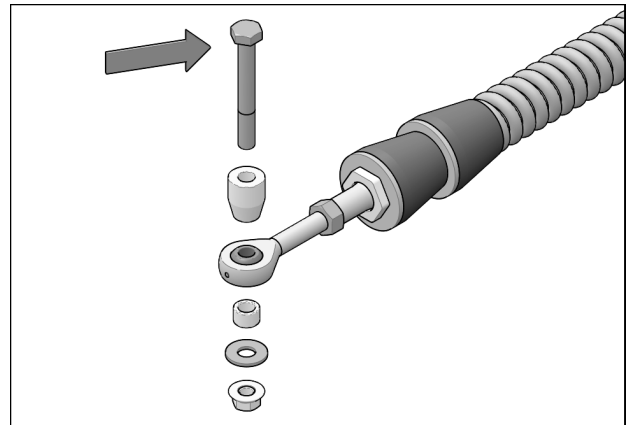


Fig. 3

CAUTION: Make sure that the bolt is inserted in the right direction. See Fig. 4

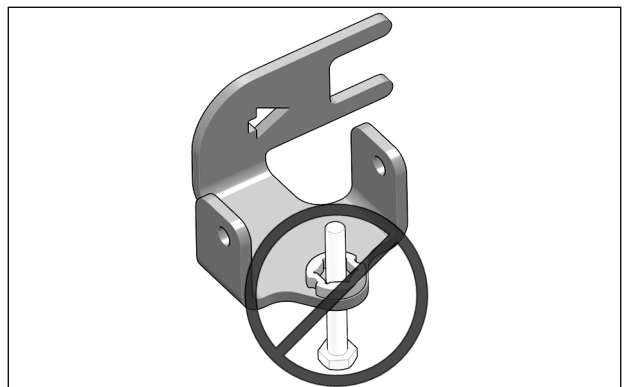


Fig. 4

- Remove bolt (1) that links lower suspension arm to wheel knuckle. See Fig. 5

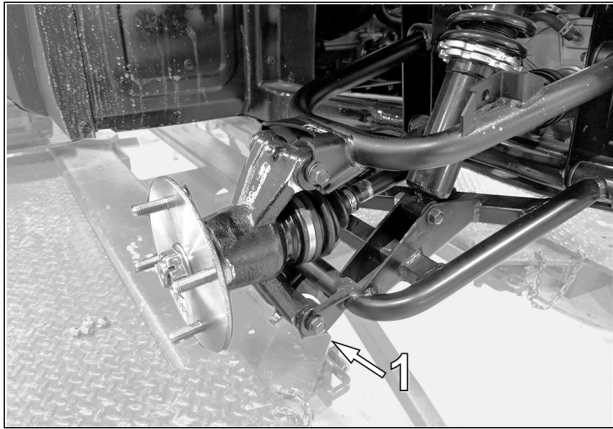


Fig. 5

- Install anchor bracket (B1-B2) on lower suspension arm and align anchor bracket bolt holes with suspension arm bolt holes. See Fig. 6

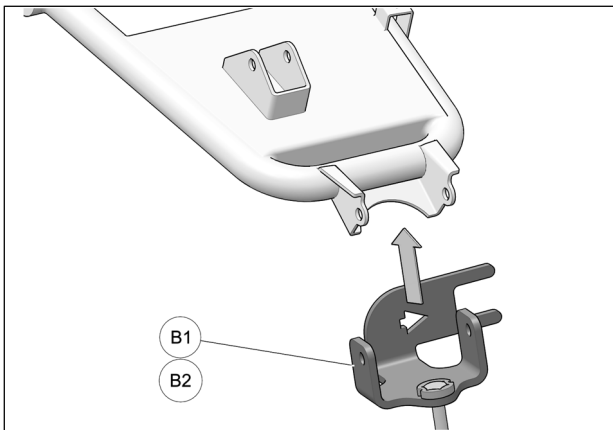


Fig. 6

- Insert new M10x120mm bolt (B3) through anchor bracket, suspension arm and wheel knuckle. Secure assembly with the provided M10 nut (B4). Torque nut to 50 N•m [37 lb•ft]. See Fig. 7

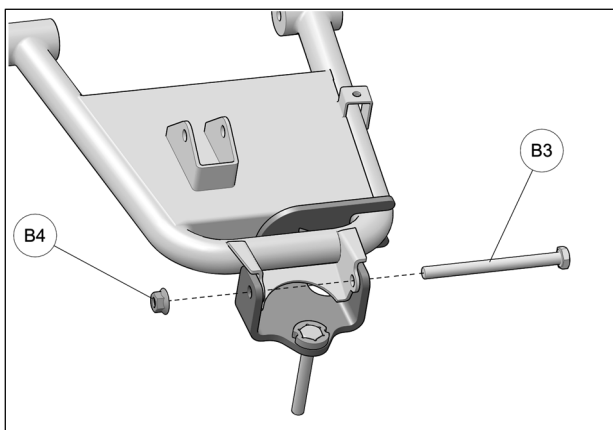


Fig. 7

- Secure undercarriage to rear hub using the provided lug nuts (D). See Fig. 8

CAUTION: If needed, take rubber protector off of hub.

CAUTION: Follow torque specification indicated by vehicle manufacturer when tightening wheel nuts.

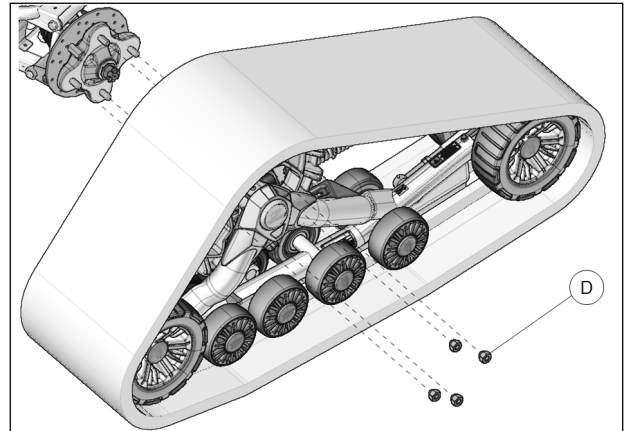


Fig. 8

- Attach stabilizing rod (1) to anchor bracket (2), using bolt (3), short spacer bushing (4), long spacer bushing (5), flat washer (6) and nut (7). Torque to 70 N•m [52 lb•ft]. See Fig. 9

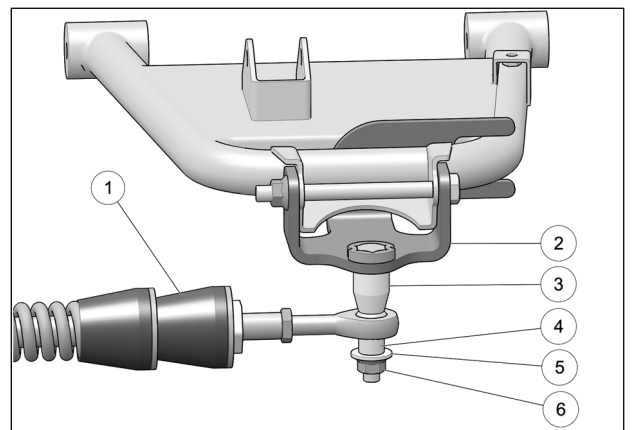


Fig. 9

CAUTION: Components must be assembled in the order shown.

- Verify that spring assembly bolt (7) is tightened to the recommended torque specification: 75 N•m [55 lb•ft]. See Fig. 10

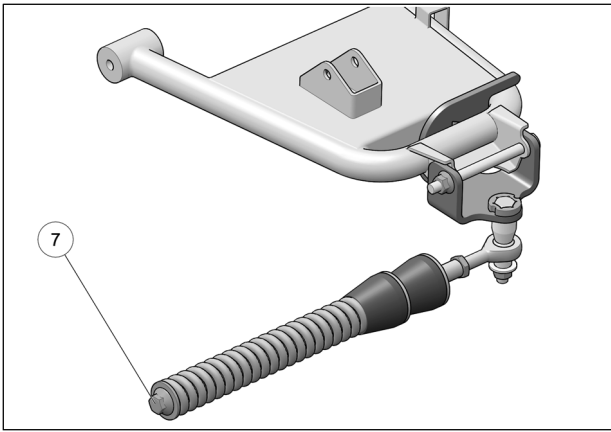


Fig. 10

11. Inspect the rear track systems and ensure that all mounting bolts were correctly tightened during installation. Lower the vehicle on the ground and proceed to install the front track systems.

FRONT TRACK SYSTEM INSTALLATION

1. Using a lifting device, raise the front of the vehicle and install appropriate stands. Ensure that the vehicle is immobilized and safe to work on.
2. Remove front wheels. Make sure that wheel studs and wheel hubs are free of dirt.
3. If applicable, remove CV joint protectors.
4. Remove bolt, washer and bushings from front stabilizing rod end and insert bolt in front anchor bracket (A1-A2) as shown in Fig. 11

NOTE: *It is not possible to insert this bolt once the bracket is attached to the suspension arm.*

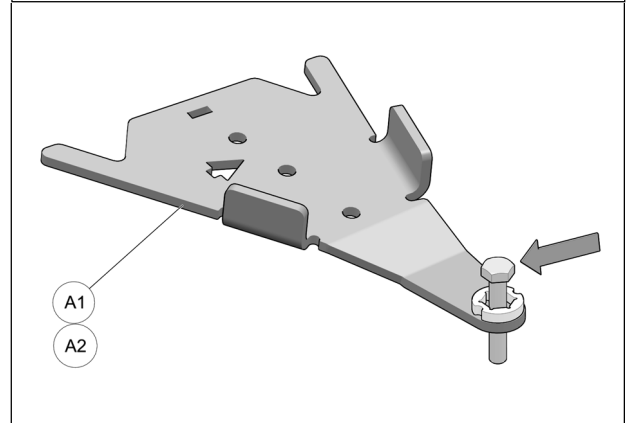
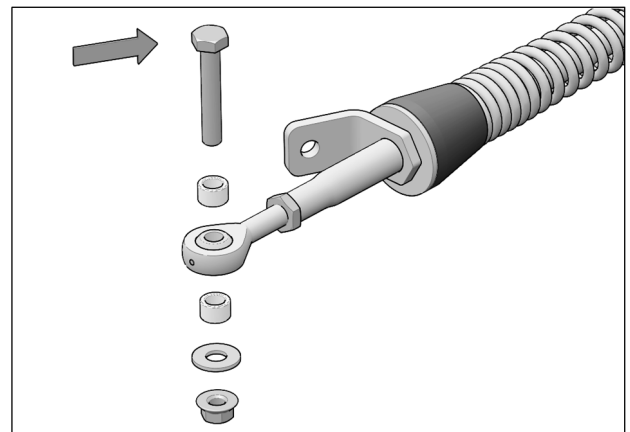


Fig. 11

CAUTION: Be sure that bolt is inserted in the right direction. See Fig. 12

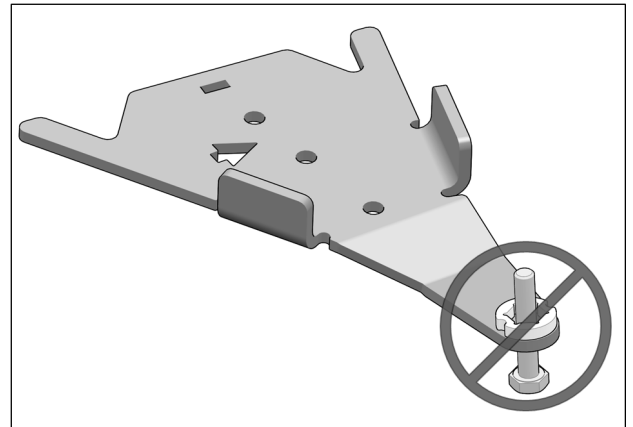


Fig. 12

5. Position bottom part of anchor bracket (**A1-A2**) assembly under front lower suspension arm, as shown in the figure below. Position bracket cover (**A3-A4**) over suspension arm and align holes in cover and bottom part. Insert M10x55mm bolts (**A5**) from the bottom and secure the two parts together with the nuts (**A6**) provided. Tighten assembly to 50 N•m [37 lb•ft] of torque. Refer to Fig. 13

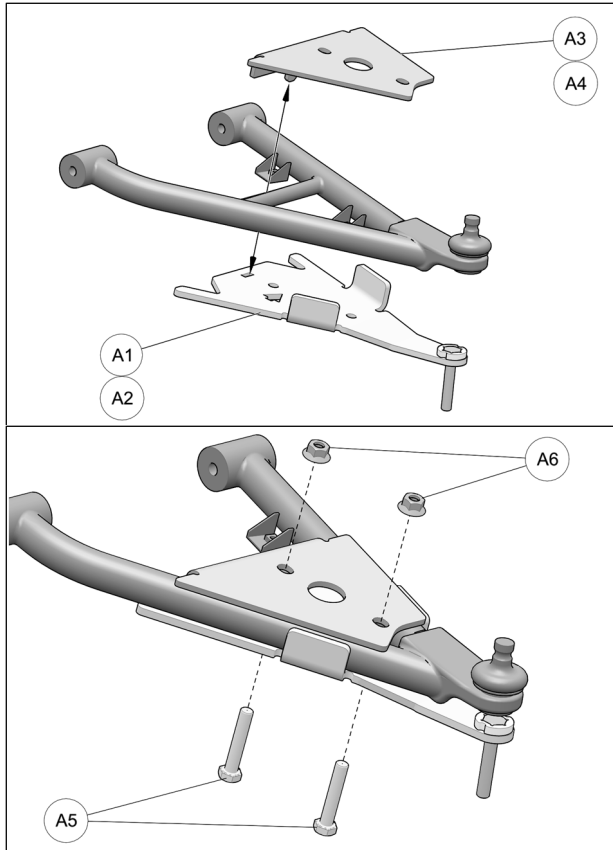


Fig. 13

6. Using the lug nuts (**D**) provided, secure undercarriages to front wheel hubs. The procedure and precautions are the same as for rear units. Refer to Fig. 8

7. Attach the stabilizing rod (**2**) to the anchor bracket (**1**), using the two spacer bushings (**3**), flat washer (**4**) and nut (**5**). Torque to 70 N•m [52 lb•ft]. Refer to Fig. 14

CAUTION: Components must be assembled in the order shown.

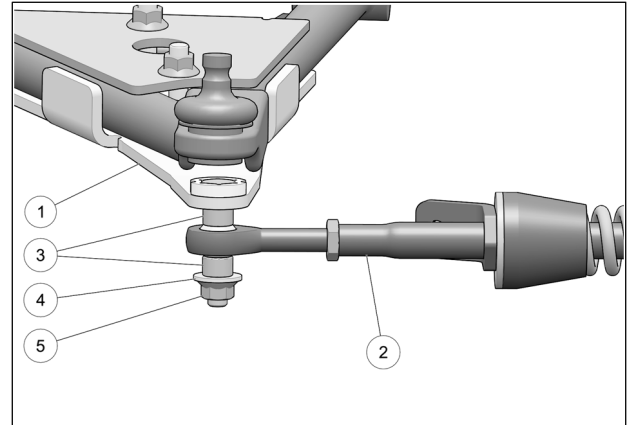


Fig. 14

8. Verify that spring assembly bolt (**6**) is tightened to the recommended torque specification: 75 N•m [55 lb•ft]. Refer to Fig. 15

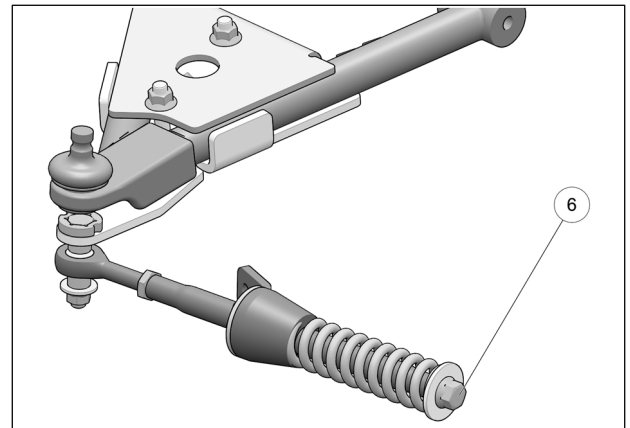


Fig. 15

STEERING LIMITER INSTALLATION

9. Assemble steering limiter cables (**C2**), aluminum disks (**C1**) and step spacers (**C5**) as shown on Fig. 16

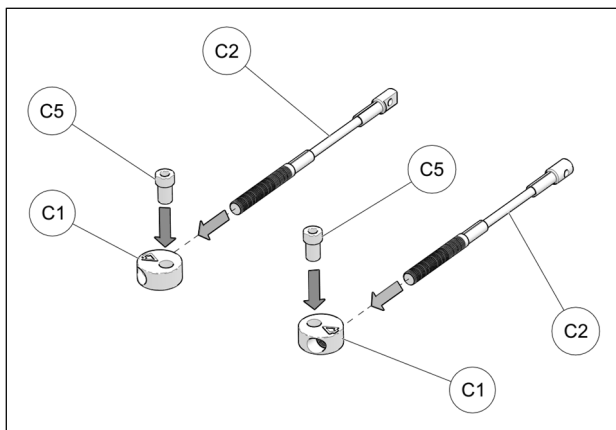


Fig. 16

IMPORTANT

10. At assembly, apply grease evenly all around step spacer bushing (**C5**) and in hole of aluminum disk (**C1**). See Fig. 17

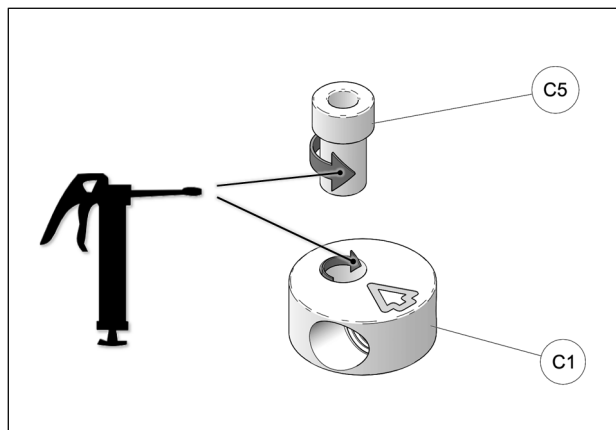


Fig. 17

11. Pass bolt (**C3**) down through opening in bracket cover and insert it in the anchor bracket's central hole. Slip steering limiter cable assembly over bolt (**C3**) and use washer (**C6**) and nut (**C7**) to secure assembly to anchor bracket. Tighten nut to 50 N•m [37 lb•ft]. Refer to Fig. 18

NOTE: Make sure arrow on top of aluminum disk points towards front of vehicle.

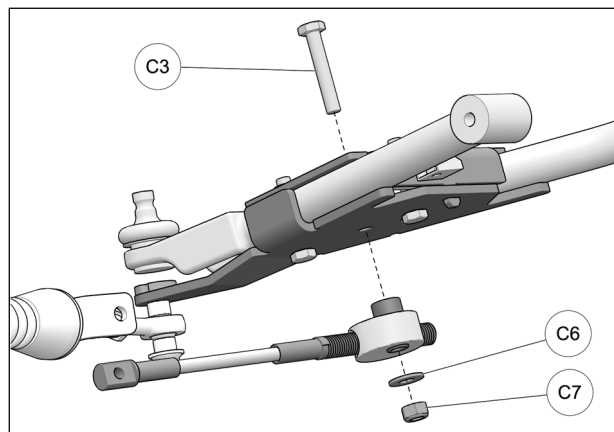


Fig. 18

STEERING LIMITER ADJUSTMENT

WARNING: Before the next steps, make sure that stabilizing arms are correctly installed, and that the angle of attack and alignment are correct. Refer to the *User Manual*.

12. Turn the vehicle's steering wheel to its maximum point of travel on the left. While maintaining pressure on the steering wheel, turn threaded rod to adjust length of cable so that the cable end hole (**1**) is located 13 to 19 mm [$\frac{1}{2}$ to $\frac{3}{4}$ in.] short of the mounting hole on the support plate (**2**). See Fig. 19

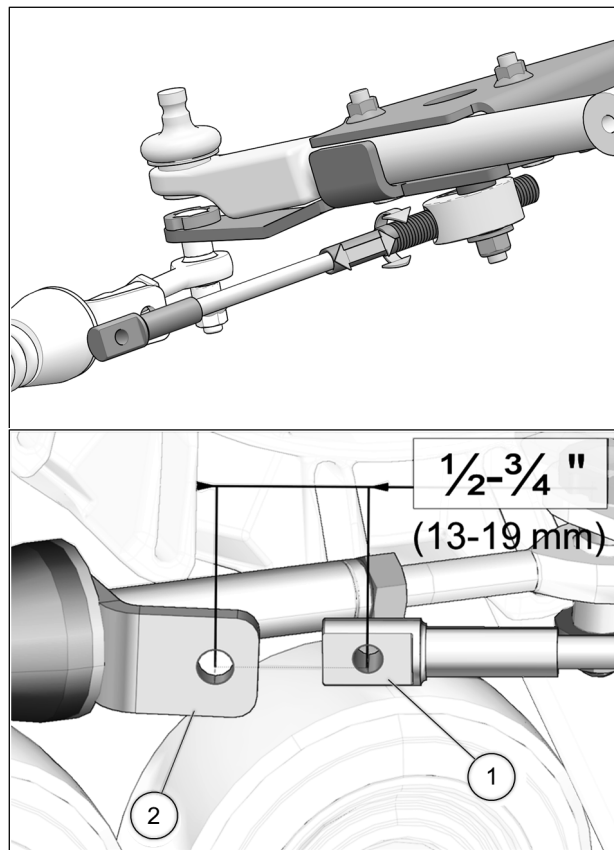


Fig. 19

13. Reverse steering wheel a little to be able to bolt support plate and cable together. Tighten provided bolt (C4) to 35 N•m [24 lb•ft]. See Fig. 20. Repeat steps on right side.

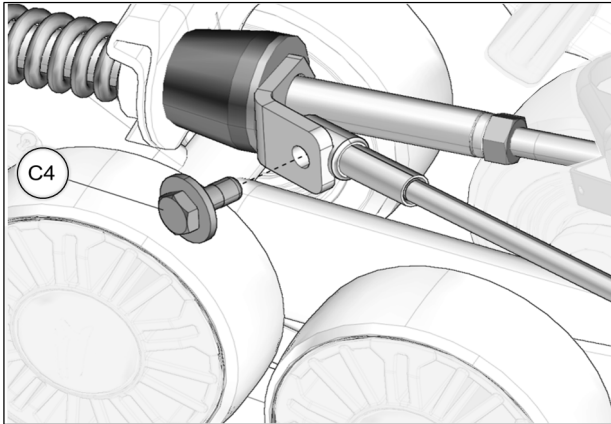


Fig. 20

FINAL INSTALLATION

1. Move upper mounting position of shocks from the more angled stock position (1) to the more upright position (2). See Fig. 21

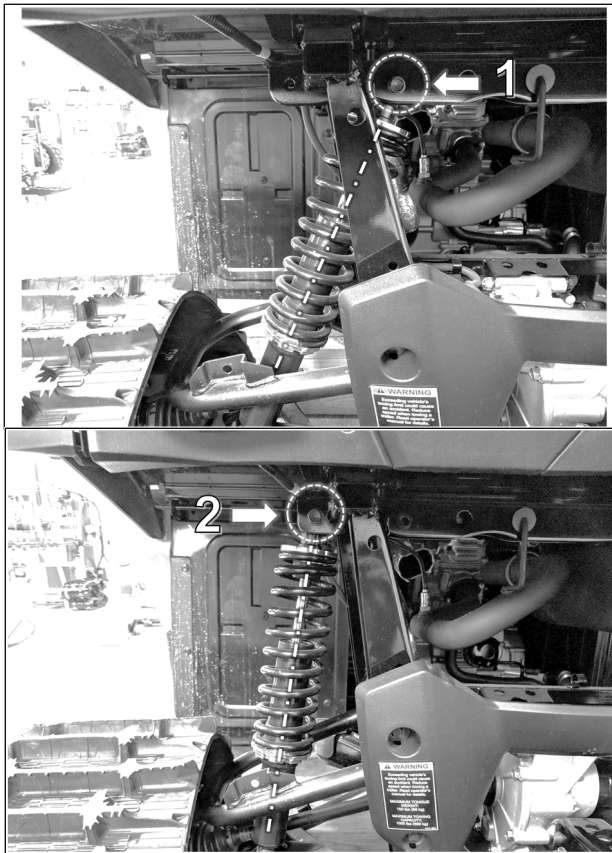


Fig. 21

2. Verify the suspension settings. If the shock absorbers are adjustable, they should be adjusted to the stiffest setting to allow for maximum clearance between the System and the vehicle's fenders.
3. Verify for possible contact between the undercarriage and the front lower fenders. If there is contact, the fenders should be modified (cut) to avoid damage to the vehicle's components and premature wear on rubber track.
4. Lower the vehicle to the ground.

ADJUSTMENTS

CAUTION: The Track System is designed to provide the best traction performance and floatability. Adjustments such as alignment, track tension, and angle of attack are necessary and mandatory for optimal System performance. For more information on these adjustments, refer to the document entitled *ADJUSTMENTS* or to the *USER MANUAL* provided with the installation kit specific to the vehicle.